

2026 New Products

Schluter®-Systems

CANADA



Effective April 1, 2026



NEW! MyDesign by Schluter-Systems

Designed for Life in **COLOR**



RAL Colors

Profiles and shelves in 190 RAL Classic colors
Pages 5-13



Digital Printing

Custom printed profiles for the perfect match
Pages 15-21





Two Technologies – Infinite Design Options

Schluter-Systems now offers a design-forward solution for projects that demand more than standard finishes. With **MyDesign by Schluter-Systems**, you can customize select profiles and SHELF models using RAL colors, or achieve even greater precision with high-resolution digital printing available on a curated range of profiles. Whether you're aligning with a brand palette, complementing architectural finishes, or enhancing a space with custom detailing, MyDesign delivers the flexibility and scalability to bring your project vision to life.

Why Choose Customization?

✓ Design Freedom

Break free from standard finishes. With 190 RAL colors and advanced digital printing, you can match, contrast, or highlight to suit your exact design intent.

✓ Brand Consistency

Ideal for commercial, hospitality, and retail environments, custom colors and prints allow you to align every detail with your brand's visual identity—right down to the trim.

✓ Seamless Integration

Digitally printed profiles can mirror tile patterns for a cohesive, uninterrupted look. Create installations where profiles blend seamlessly into the surrounding surfaces.

✓ Premium Professional Finish

Engineered for lasting performance, every customized element is backed by Schluter's proven powder-coating and printing processes, ensuring durability without compromising on design.

**YELLOW
Y
HOTELS**



RAL Color Customization



Design without compromise

Color is more than a detail—it's a defining element of your space. With MyDesign by Schluter-Systems, you can now customize select profiles and shelves in any of the 190 RAL Classic colors, creating a finish that aligns precisely with your project vision.

Whether you're reinforcing brand identity in a commercial space, complementing surrounding finishes in a high-end residential build, or making a bold visual statement, RAL color customization offers seamless integration and elevated design control.

With RAL color customization, you can:

- ✓ Match trim to tile, grout, or paint for a cohesive finish
- ✓ Highlight architectural features with striking accents
- ✓ Bring corporate palettes into hospitality, retail, or multi-unit developments

From golden yellow and emerald green to blue grey and beyond, your project isn't limited by what's available off the shelf. It's defined by your vision—**right down to the last detail.**





How to Order

Profiles & Shelves in Custom RAL Colors

① Product Selection

Refer to pages 7–13 for item codes and pricing for products available in MyDesign RAL.


② Color Selection

- ✓ Select your RAL Classic color from the Schluter MyDesign offering.
- ✓ Provide the exact 4-digit RAL code (e.g., RAL 9010) when ordering.

Important: Colors are matched exclusively to the official RAL system. Digital screens, web images, and printed brochures are not accurate for final color selection.

③ Place Your Order

After confirming color and quantities, contact Customer Support to place your order:

 800-667-8746

 csrcanada@schluter.com

Your Customer Support representative will walk you through the custom ordering process and requirements.

Terms & Conditions will be outlined in the custom ordering agreement.

④ Set-up Fee

A set-up fee is applied to RAL orders and is based on order quantity, as indicated in the table below:

Order quantity	10-99	100-249	250+
Set-up fee	\$450	\$225	No set-up fee

- Set-up fee is charged at time of ordering.
- Set-up fee is charged once per color and waived on recurring orders of the same color.

Additional Information

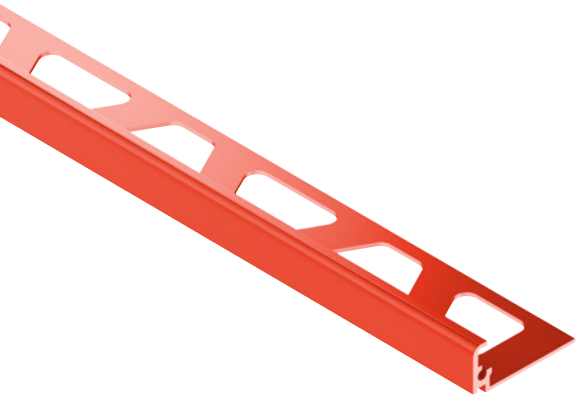
 schluter.ca



Custom RAL Colors

Schluter®-JOLLY

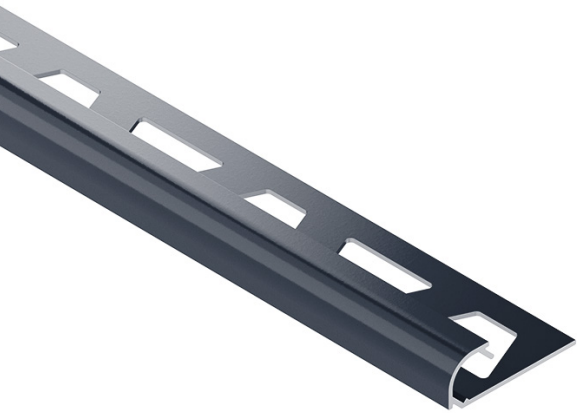
90° L-angle profile.



JOLLY				
Length = 2.5 m - 8' 2-1/2"		Color-coated aluminum		
H = mm - in.	Profile	\$ / Length	Outside corner	\$ / Unit
6 - 1/4	C/J 60 A	32.23	C/EV/J 60 A	18.02
8 - 5/16	C/J 80 A	33.15	C/EV/J 80 A	18.02
10 - 3/8	C/J 100 A	34.43	C/EV/J 100 A	18.02
11 - 7/16	C/J 110 A	35.13	C/EV/J 110 A	18.02
12.5 - 1/2	C/J 125 A	35.82	C/EV/J 125 A	18.02

Schluter®-RONDEC

Symmetrically rounded bullnose profile.

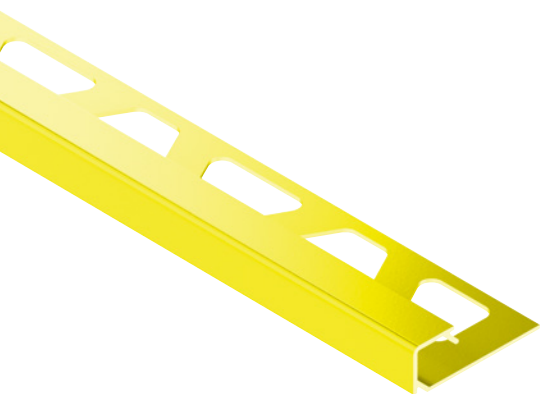


RONDEC			
Length = 2.5 m - 8' 2-1/2"		Color-coated aluminum	
H = mm - in.	Profile	\$ / Length	
6 - 1/4	C/RO 60 A	35.76	
8 - 5/16	C/RO 80 A	38.66	
10 - 3/8	C/RO 100 A	42.00	
12.5 - 1/2	C/RO 125 A	48.38	

H = mm - in.	Inside corner	Outside corner	\$ / Unit
6 - 1/4	C/IV/RO 60 A	C/EV/RO 60 A	23.47
8 - 5/16	C/IV/RO 80 A	C/EV/RO 80 A	23.47
10 - 3/8	C/IV/RO 100 A	C/EV/RO 100 A	23.47
12.5 - 1/2	C/IV/RO 125 A	C/EV/RO 125 A	23.47

Schluter®-QUADEC

Square edge profile.



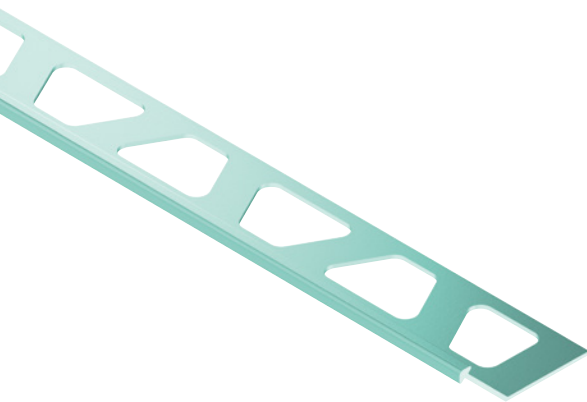
QUADEC				
Length = 2.5 m - 8' 2-1/2"		Color-coated aluminum		
H = mm - in.	Profile	\$ / Length	Inside/Outside corner	\$ / Unit
4.5 - 3/16	C/Q 45 A	34.08	C/EV/Q 45 A	22.82
6 - 1/4	C/Q 60 A	35.76	C/EV/Q 60 A	22.82
8 - 5/16	C/Q 80 A	38.66	C/EV/Q 80 A	22.82
10 - 3/8	C/Q 100 A	42.00	C/EV/Q 100 A	22.82
11 - 7/16	C/Q 110 A	43.86	C/EV/Q 110 A	22.82
12.5 - 1/2	C/Q 125 A	47.43	C/EV/Q 125 A	22.82



Custom RAL Colors

Schluter®-FINEC

Slim, minimalist profile.



FINEC			
Length = 2.5 m - 8' 2-1/2"	Color-coated aluminum		
H = mm - in.	Profile	\$ / Length	
2.5 - 3/32	C/F 25 A	44.55	
4.5 - 3/16	C/F 45 A	45.22	
7 - 9/32	C/F 70 A	45.89	
9 - 11/32	C/F 90 A	47.29	
11 - 7/16	C/F 110 A	47.66	
12.5 - 1/2	C/F 125 A	48.33	

Schluter®-FINEC-SQ

Combines the slim design of FINEC with a squared 3/16" (4.5 mm) reveal.

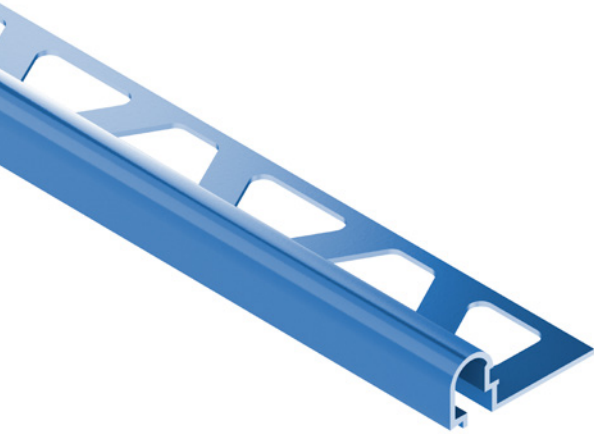


FINEC-SQ				
Length = 2.5 m - 8' 2-1/2"	Color-coated aluminum			
H = mm - in.	Profile	\$ / Length	Inside/Outside corner	\$ / Unit
11 - 7/16	C/FSQ 110 A	52.68	C/EV/Q 45A	22.82
12.5 - 1/2	C/FSQ 125 A	52.79		
15 - 9/16	C/FSQ 150 A	52.94		

Custom RAL Colors

Schluter®-RONDEC-DB

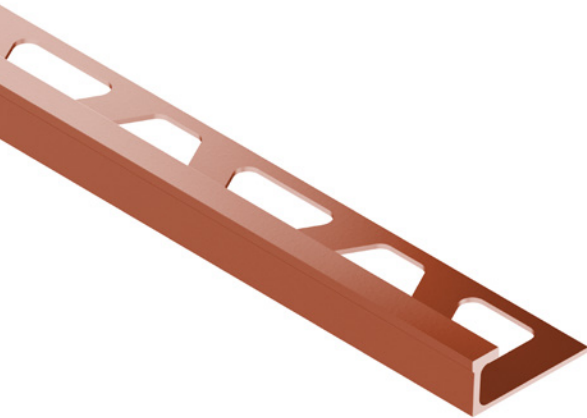
Decorative profile with pronounced visible surface.



RONDEC-DB		
Length = 2.5 m - 8' 2-1/2"	Color-coated aluminum	
H = mm - in.	Profile	\$ / Length
14 - 17/32	C/DB 14 A	60.55

Schluter®-DECO

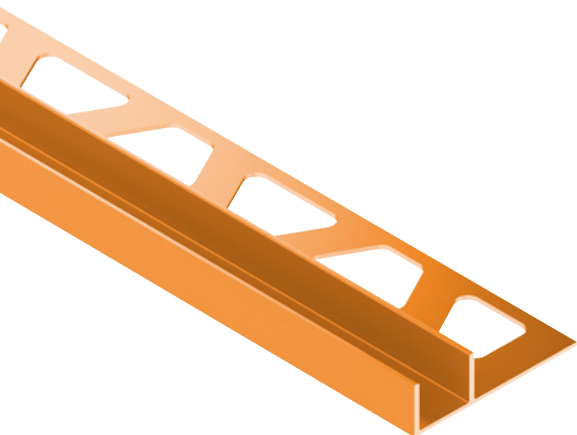
Finishing profile for decorative joint design.



DECO		
Length = 2.5 m - 8' 2-1/2"	Color-coated aluminum	
H = mm - in.	Profile	\$ / Length
8 - 5/16	C/A 80 D	53.60
10 - 3/8	C/A 100 D	57.19
12.5 - 1/2	C/A 125 D	58.83

Schluter®-DECO-SG

Forms a shadow gap for decorative designs or as a support for glass panels.



DECO-SG		
Length = 2.5 m - 8' 2-1/2"	Color-coated aluminum	
H = mm - in.	Profile	\$ / Length
W = 12.5 mm - 1/2"		
8 - 5/16	C/SG 80 A 12	66.88
10 - 3/8	C/SG 100 A 12	68.35
11 - 7/16	C/SG 110 A 12	69.12
12.5 - 1/2	C/SG 125 A 12	69.67
W = 15 mm - 9/16"		
8 - 5/16	C/SG 80 A 15	69.49
10 - 3/8	C/SG 100 A 15	70.96
11 - 7/16	C/SG 110 A 15	71.73
12.5 - 1/2	C/SG 125 A 15	72.28



Custom RAL Colors

Schluter®-DESIGNLINE

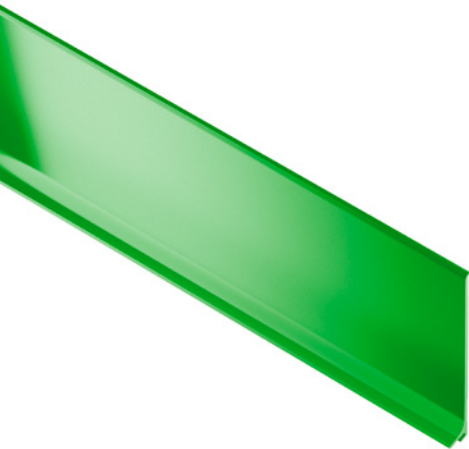
Border profile for decorative designs.



DESIGNLINE		
Length = 2.5 m - 8' 2-1/2"	Color-coated aluminum	
H = mm - in.	Profile	\$/ Length
6 - 1/4	C/DL 625 A	66.30

Schluter®-DESIGNBASE-SL

Modern alternative to traditional baseboards.



DESIGNBASE-SL		
Length = 2.5 m - 8' 2-1/2"	Color-coated aluminum	
H = mm - in.	Profile	\$/ Length
60 - 2-3/8	C/DBSL 60 A	78.16
80 - 3-1/8	C/DBSL 80 A	105.77

H = mm - in.	Inside corner	Outside corner	\$/ Unit
60 - 2-3/8	C/ID/DBSL 60 A	C/ED/DBSL 60 A	22.50
80 - 3-1/8	C/ID/DBSL 80 A	C/ED/DBSL 80 A	22.50

H = mm - in.	End cap (left)	End cap (right)	\$/ Unit
60 - 2-3/8	C/EL/DBSL 60 A	C/ER/DBSL 60 A	22.50
80 - 3-1/8	C/EL/DBSL 80 A	C/ER/DBSL 80 A	22.50

H = mm - in.	Connector	\$/ Unit
60 - 2-3/8	C/V/DBSL 60 A	22.50
80 - 3-1/8	C/V/DBSL 80 A	22.50

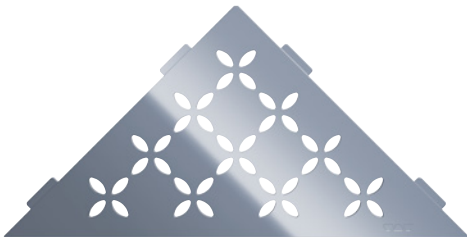




Custom RAL Colors

Schluter®-SHELF-E

Corner shelves that can be retrofitted or installed during tiling.
Available in three shapes: triangular, pentagonal, and quadrilateral.



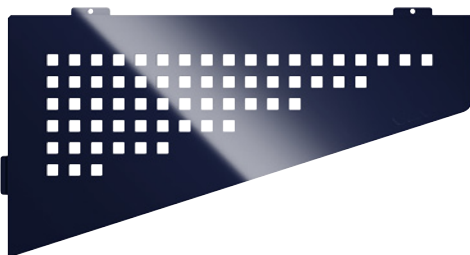
Triangular

SHELF-E Triangular		
Color-coated aluminum		
Design	Item No.	\$ / Unit
SQUARE	C/SES1 D3 A	126.66
FLORAL	C/SES1 D5 A	126.66
CURVE	C/SES1 D6 A	119.21
PURE	C/SES1 D7 A	119.21
WAVE	C/SES1 D10 A	126.66



Pentagonal

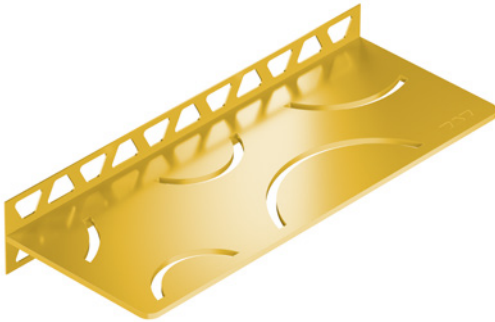
SHELF-E Pentagonal		
Color-coated aluminum		
Design	Item No.	\$ / Unit
SQUARE	C/SES2 D3 A	142.82
FLORAL	C/SES2 D5 A	142.82
CURVE	C/SES2 D6 A	132.88
PURE	C/SES2 D7 A	132.88
WAVE	C/SES2 D10 A	142.82



Quadrilateral

SHELF-E Quadrilateral		
Color-coated aluminum		
Design	Item No.	\$ / Unit
SQUARE	C/SES3 D3 A	163.95
FLORAL	C/SES3 D5 A	163.95
CURVE	C/SES3 D6 A	149.03
PURE	C/SES3 D7 A	149.03
WAVE	C/SES3 D10 A	163.95

Custom RAL Colors



Schluter®-SHELFW

Wall-mounted rectangular shelf with perforated legs for installation during tiling.

SHELFW		
Color-coated aluminum		
Design	Item No.	\$ / Unit
SQUARE	C/SWS1 D3 A	162.69
FLORAL	C/SWS1 D5 A	162.69
CURVE	C/SWS1 D6 A	137.85
PURE	C/SWS1 D7 A	137.85
WAVE	C/SWS1 D10 A	162.69



Schluter®-SHELFW-N

Made to fit KERDI-BOARD niches, installed during tiling.

SHELFW-N		
Color-coated aluminum		
Design	Item No.	\$ / Unit
SQUARE	C/SNS1 D3 A	141.58
FLORAL	C/SNS1 D5 A	141.58
CURVE	C/SNS1 D6 A	134.12
PURE	C/SNS1 D7 A	134.12
WAVE	C/SNS1 D10 A	141.58



Digital Printing

Design precision through digital innovation



Today's tile designs are more advanced and individualized than ever — and now, your finishing profiles can keep pace. With MyDesign by Schluter-Systems, modern digital printing allows you to customize select profiles to visually blend with surrounding surfaces or stand out with precision.

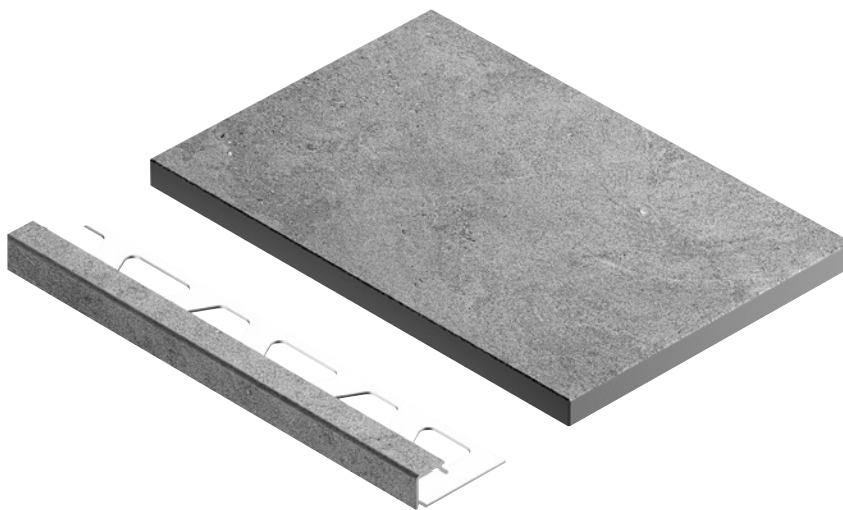
Whether you're designing with natural textures, bold patterns, or bespoke finishes, digital printing offers refined integration and elevated creative freedom.

With digital printing, you can:

- ✓ Replicate tile textures like wood, marble, or stone for a cohesive look
- ✓ Extend tile graphics or patterns directly onto profiles
- ✓ Incorporate branding, logos, or custom motifs in commercial environments

Bring detail, continuity, and character to your tile installations—with finishes that do more than frame your design.

They complete it.





How to Order


Profiles in Custom Digital Print

① Product Selection

Refer to pages 17–21 for item codes and pricing for profiles available in MyDesign Digital Print.

② Place your Order

After confirming your profile selection, contact Customer Support to begin your order process:

 800-667-8746

 csrcanada@schluter.com

Custom printed designs require submission of a physical floor covering sample for high-resolution scanning or an approved digital artwork. Schluter-Systems will provide digitally printed samples for on-site review and approval prior to production; final orders may be placed only after sample approval.

Your Customer Support representative will walk you through the sample and custom product ordering process and requirements.

Terms & Conditions will be outlined in the custom ordering agreement.

③ Sample Fee

An initial \$550 sample fee applies to Digital Print. A credit is applied based on the final quantity ordered, as indicated in the table below:

Order quantity	10-99	100-249	250+
Sample fee	\$550	\$550	\$550
Sample fee credit	-	\$275	\$550

- Sample fee is billed at the time of order confirmation, when the sample process begins.
- Credit is applied once the order is placed, based on the final ordered quantity.
- Sample fee is waived for recurring orders that do not require new high-resolution scanning or sampling.

Additional Information

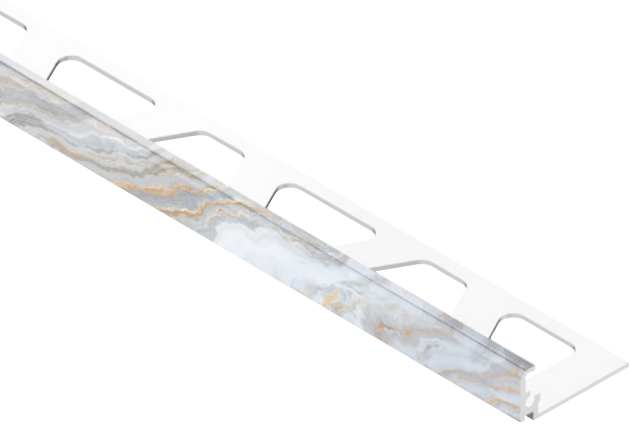
 schluter.ca



Custom Digital Print

Schluter®-JOLLY

90° L-angle profile.



JOLLY				
Length = 2.5 m - 8' 2-1/2"	Color-coated aluminum			
H = mm - in.	Profile	\$ / Length	Outside corner	\$ / Unit
6 - 1/4	C/J 60 DP	84.88	C/EV/J 60 DP	45.00
8 - 5/16	C/J 80 DP	85.80	C/EV/J 80 DP	45.00
10 - 3/8	C/J 100 DP	87.08	C/EV/J 100 DP	45.00
11 - 7/16	C/J 110 DP	87.78	C/EV/J 110 DP	45.00
12.5 - 1/2	C/J 125 DP	88.47	C/EV/J 125 DP	45.00

Schluter®-RONDEC

Symmetrically rounded bullnose profile.

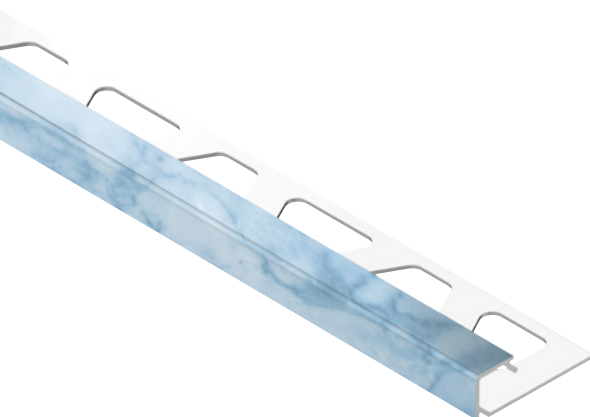


RONDEC		
Length = 2.5 m - 8' 2-1/2"	Color-coated aluminum	
H = mm - in.	Profile	\$ / Length
6 - 1/4	C/RO 60 DP	88.41
8 - 5/16	C/RO 80 DP	91.31
10 - 3/8	C/RO 100 DP	94.65
12.5 - 1/2	C/RO 125 DP	101.03

H = mm - in.	Inside corner	Outside corner	\$ / Unit
6 - 1/4	C/IV/RO 60 DP	C/EV/RO 60 DP	45.00
8 - 5/16	C/IV/RO 80 DP	C/EV/RO 80 DP	45.00
10 - 3/8	C/IV/RO 100 DP	C/EV/RO 100 DP	45.00
12.5 - 1/2	C/IV/RO 125 DP	C/EV/RO 125 DP	45.00

Schluter®-QUADEC

Square edge profile.



QUADEC				
Length = 2.5 m - 8' 2-1/2"	Color-coated aluminum			
H = mm - in.	Profile	\$ / Length	Inside/Outside corner	\$ / Unit
6 - 1/4	C/Q 60 DP	88.41	C/EV/Q 60 DP	45.00
8 - 5/16	C/Q 80 DP	91.31	C/EV/Q 80 DP	45.00
10 - 3/8	C/Q 100 DP	94.65	C/EV/Q 100 DP	45.00
11 - 7/16	C/Q 110 DP	96.51	C/EV/Q 110 DP	45.00
12.5 - 1/2	C/Q 125 DP	100.08	C/EV/Q 125 DP	45.00



Custom Digital Print

Schluter®-DESIGNLINE

Border profile for decorative designs.



DESIGNLINE		
Length = 2.5 m - 8' 2-1/2"	Color-coated aluminum	
H = mm - in.	Profile	\$ / Length
6 - 1/4	C/DL 625 DP	118.95



Custom Digital Print

Schluter®-DESIGNBASE-SL

Modern alternative to traditional baseboards.



DESIGNBASE-SL			
Length = 2.5 m - 8' 2-1/2"	Color-coated aluminum		
H = mm - in.	Profile		\$ / Length
60 - 2-3/8	C/DBSL 60 DP		120.00
H = mm - in.	Inside corner	Outside corner	\$ / Unit
60 - 2-3/8	C/ID/DBSL 60 DP	C/ED/DBSL 60 DP	45.00
H = mm - in.	End cap (left)	End cap (right)	\$ / Unit
60 - 2-3/8	C/EL/DBSL 60 DP	C/ER/DBSL 60 DP	45.00
H = mm - in.	Connector		\$ / Unit
60 - 2-3/8	C/V/DBSL 60 DP		45.00

**Schluter®-RONDEC-STEP**

Profile with rounded upper edge for countertops or shelves.

RONDEC-STEP			
Length = 2.5 m - 8' 2-1/2"	Color-coated aluminum		
H = mm - in.	Profile		\$ / Length
8 - 5/16	C/RS 80 DP 39		145.00
10 - 3/8	C/RS 100 DP 39		147.00
12.5 - 1/2	C/RS 125 DP 39		151.00
H = mm - in.	Inside corner 90°	Outside corner 90°	\$ / Unit
8 - 5/16	C/I90RS 80 DP 39	C/E90RS 80 DP 39	45.00
10 - 3/8	C/I90RS 100 DP 39	C/E90RS 100 DP 39	45.00
12.5 - 1/2	C/I90RS 125 DP 39	C/E90RS 125 DP 39	45.00
H = mm - in.	Inside corner 135°	Outside corner 135°	\$ / Unit
8 - 5/16	C/I135RS 80 DP 39	C/E135RS 80 DP 39	45.00
10 - 3/8	C/I135RS 100 DP 39	C/E135RS 100 DP 39	45.00
12.5 - 1/2	C/I135RS 125 DP 39	C/E135RS 125 DP 39	45.00



Custom Digital Print

Schluter®-DILEX-AHK

Cove-shaped profile for tile to tile inside corners.



DILEX-AHK		
Length = 2.5 m - 8' 2-1/2"	Color-coated aluminum	
H = mm - in.	Profile	\$/ Length
8 - 5/16	C/AHK1S 80 DP	132.44
10 - 3/8	C/AHK1S 100 DP	133.40
12.5 - 1/2	C/AHK1S 125 DP	134.88

Accessory	Item No.	\$/ Unit
Inside corner, 90°	C/190/AHK1S/DP	45.00
Inside corner, 135°	C/1135/AHK1S/DP	45.00
Outside corner, 90° - round	C/E90/AHK1S/DP	45.00
Outside corner, 90° - square	C/E90Q/AHK1S/DP	45.00
Outside corner, 135°	C/E135/AHK1S/DP	45.00
End cap	C/E/AHK1S/DP	45.00

Schluter®-DILEX-AHKA

Cove-shaped profile for tile to previously finished floors.



DILEX-AHKA		
Length = 2.5 m - 8' 2-1/2"	Color-coated aluminum	
H = mm - in.	Profile	\$/ Length
8 - 5/16	C/AHKA 80 DP	132.44
10 - 3/8	C/AHKA 100 DP	133.40
12.5 - 1/2	C/AHKA 125 DP	134.88
15 - 9/16	C/AHKA 150 DP	136.28

Accessory	Item No.	\$/ Unit
Inside corner, 90°	C/190/AHKA/DP	45.00
Inside corner, 135°	C/1135/AHKA/DP	45.00
Outside corner, 90°	C/E90/AHKA/DP	45.00
Outside corner, 135°	C/E135/AHKA/DP	45.00
End cap, left	C/EL/AHKA/DP	45.00
End cap, right	C/ER/AHKA/DP	45.00



DIAGONAL



QUAD



SQUARE



PARALLEL

New Grate Designs

Schluter®-KERDI-DRAIN

The **KERDI-DRAIN-STYLE** line has been expanded with four new stainless steel grate designs, offering more ways to complement your shower. Each grate is available in brushed stainless steel and nine TRENDLINE finishes for increased design flexibility.

- Available in brushed stainless steel and nine TRENDLINE finishes.
- 4 in (100 mm) grate.
- Compatible with KERDI-DRAIN bonding flange drains.
- Laterally adjustable to align with the tile grid and leveled to the tiled surface.
- Accommodates tile thickness from 1/4 in (6 mm) to 1-1/4 in (32 mm).

KERDI-DRAIN-STYLE – Metallic Finishes

Stainless Steel

DIAGONAL 100 mm - 4"		
Grate finish	Item No.	\$ / Unit
Brushed stainless steel (EB)	KDIF4 GRK EB D16	190.00



EB

QUAD 100 mm - 4"		
Grate finish	Item No.	\$ / Unit
Brushed stainless steel (EB)	KDIF4 GRK EB D17	190.00



EB

SQUARE 100 mm - 4"		
Grate finish	Item No.	\$ / Unit
Brushed stainless steel (EB)	KDIF4 GRK EB D18	190.00






EB

PARALLEL 100 mm - 4"		
Grate finish	Item No.	\$ / Unit
Brushed stainless steel (EB)	KDIF4 GRK EB D21	190.00



EB

Contents	
	1x Grate and frame
	1x Height adjustment collar
	1x Lateral adjustment ring

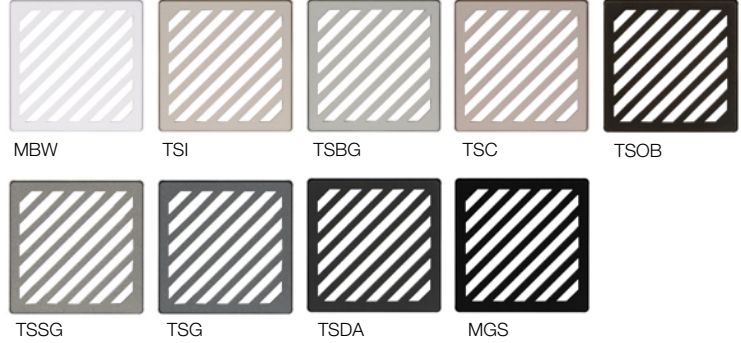




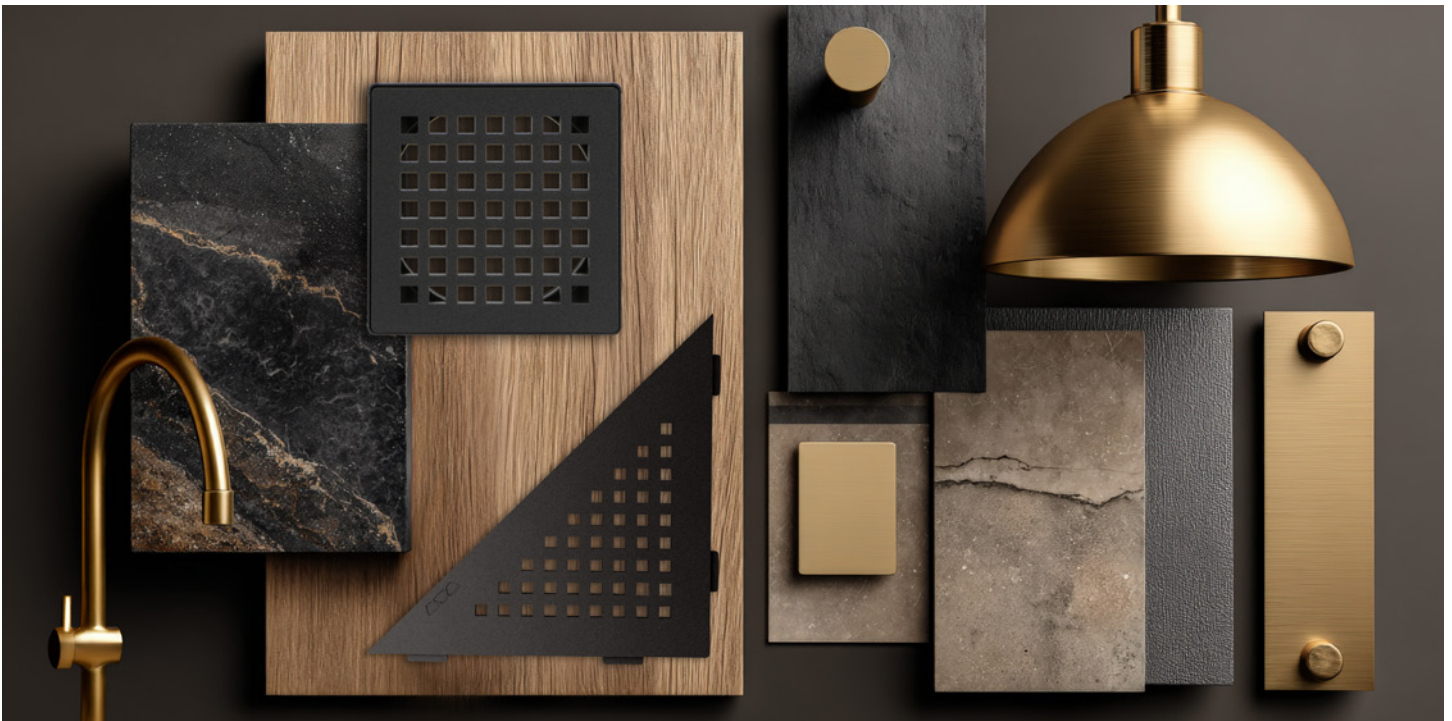
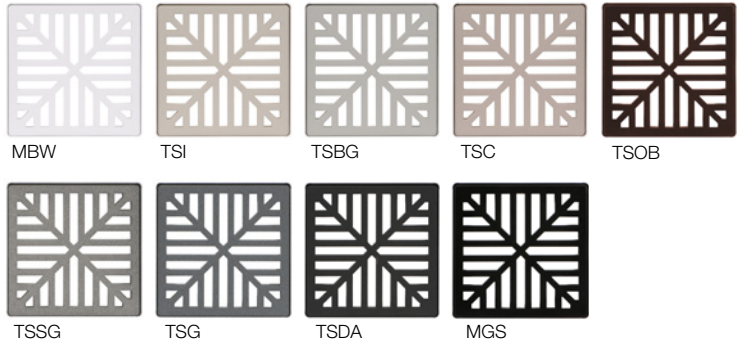
KERDI-DRAIN-STYLE – TRENDLINE

Stainless Steel

DIAGONAL		100 mm - 4"
Grate finish	Item No.	\$ / Unit
Matte white (MBW)	KDIF4 GRK MBW D16	198.64
Ivory (TSI)	KDIF4 GRK TSI D16	198.64
Greige (TSBG)	KDIF4 GRK TSBG D16	198.64
Cream (TSC)	KDIF4 GRK TSC D16	198.64
Bronze (TSOB)	KDIF4 GRK TSOB D16	198.64
Stone grey (TSSG)	KDIF4 GRK TSSG D16	198.64
Pewter (TSG)	KDIF4 GRK TSG D16	198.64
Dark anthracite (TSDA)	KDIF4 GRK TSDA D16	198.64
Matte black (MGS)	KDIF4 GRK MGS D16	198.64



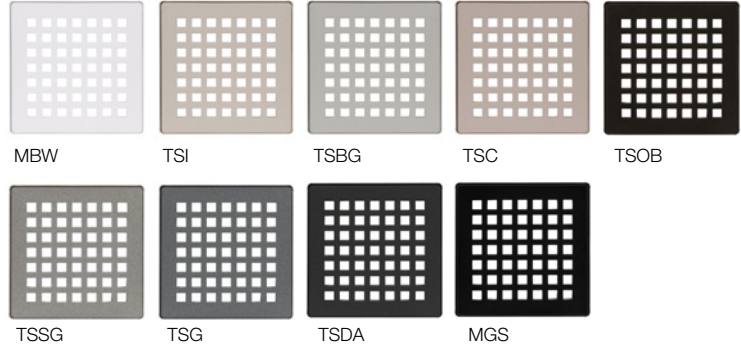
QUAD		100 mm - 4"
Grate finish	Item No.	\$ / Unit
Matte white (MBW)	KDIF4 GRK MBW D17	198.64
Ivory (TSI)	KDIF4 GRK TSI D17	198.64
Greige (TSBG)	KDIF4 GRK TSBG D17	198.64
Cream (TSC)	KDIF4 GRK TSC D17	198.64
Bronze (TSOB)	KDIF4 GRK TSOB D17	198.64
Stone grey (TSSG)	KDIF4 GRK TSSG D17	198.64
Pewter (TSG)	KDIF4 GRK TSG D17	198.64
Dark anthracite (TSDA)	KDIF4 GRK TSDA D17	198.64
Matte black (MGS)	KDIF4 GRK MGS D17	198.64



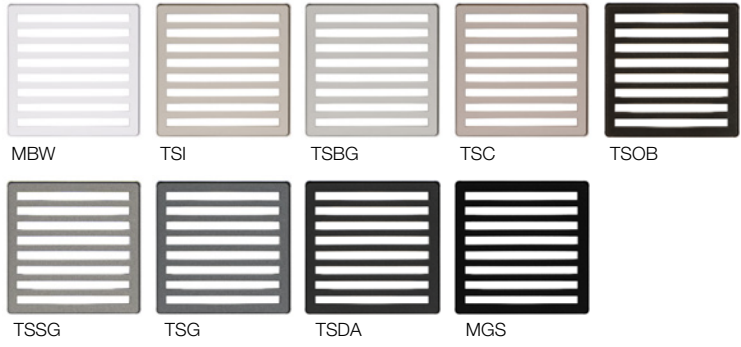
KERDI-DRAIN-STYLE – TRENDLINE

Stainless Steel

SQUARE 100 mm - 4"		
Grate finish	Item No.	\$ / Unit
Matte white (MBW)	KDIF4 GRK MBW D18	198.64
Ivory (TSI)	KDIF4 GRK TSI D18	198.64
Greige (TSBG)	KDIF4 GRK TSBG D18	198.64
Cream (TSC)	KDIF4 GRK TSC D18	198.64
Bronze (TSOB)	KDIF4 GRK TSOB D18	198.64
Stone grey (TSSG)	KDIF4 GRK TSSG D18	198.64
Pewter (TSG)	KDIF4 GRK TSG D18	198.64
Dark anthracite (TSDA)	KDIF4 GRK TSDA D18	198.64
Matte black (MGS)	KDIF4 GRK MGS D18	198.64



PARALLEL 100 mm - 4"		
Grate finish	Item No.	\$ / Unit
Matte white (MBW)	KDIF4 GRK MBW D21	198.64
Ivory (TSI)	KDIF4 GRK TSI D21	198.64
Greige (TSBG)	KDIF4 GRK TSBG D21	198.64
Cream (TSC)	KDIF4 GRK TSC D21	198.64
Bronze (TSOB)	KDIF4 GRK TSOB D21	198.64
Stone grey (TSSG)	KDIF4 GRK TSSG D21	198.64
Pewter (TSG)	KDIF4 GRK TSG D21	198.64
Dark anthracite (TSDA)	KDIF4 GRK TSDA D21	198.64
Matte black (MGS)	KDIF4 GRK MGS D21	198.64



Contents



1x
Grate and frame



1x
Height adjustment collar



1x
Lateral adjustment ring



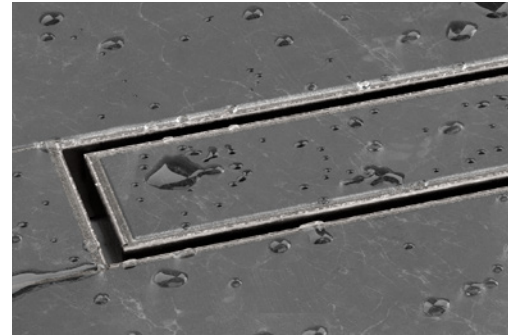
TILE Grate with Thin Frame




Schluter®-KERDI-LINE-TF

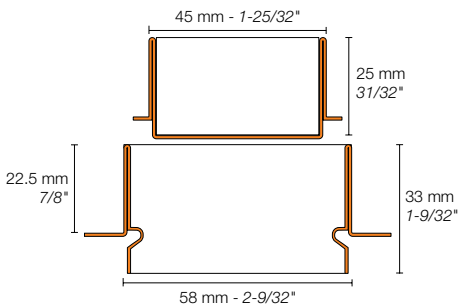
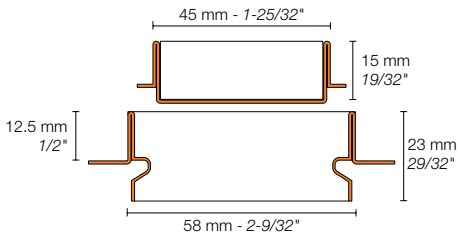
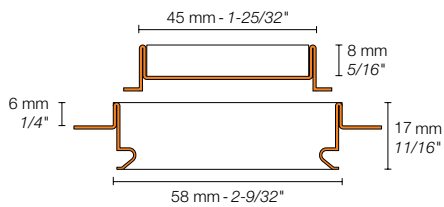
KERDI-LINE-TF combines minimalist style with functional protection. Its thin stainless steel frames protect the tile edges around the grate opening and surrounding tile.




- Creates a defined boundary that helps maintain clean, consistent grout lines - ideal for mosaics or small-format tiles.
- Allows the grate to be removed and reinserted easily without disturbing the surrounding tiles or grout.
- Best suited for areas where the drain is surrounded by tile on all sides, rather than positioned flush against a wall.

KERDI-LINE-TF



Contents	
	1x Tileable covering support
	1x Frame (see product tables for frame height options)
	1x Grate removal tool



Grate assemblies - TILE with thin frame			
		6 mm - 1/4" frame height for 5 mm to 7 mm - 13/64" to 9/32" -thick coverings	
Length = cm - in.	TILE - THIN FRAME (H)		
	Item No.	\$ / Unit	
50 - 19-11/16	KLTFH 6 E 50	392.77	
60 - 23-5/8	KLTFH 6 E 60	404.55	
70 - 27-9/16	KLTFH 6 E 70	416.33	
80 - 31-1/2	KLTFH 6 E 80	428.12	
90 - 35-7/16	KLTFH 6 E 90	439.90	
100 - 39-3/8	KLTFH 6 E 100	451.68	
110 - 43-5/16	KLTFH 6 E 110	463.46	
120 - 47-1/4	KLTFH 6 E 120	475.25	
		12.5 mm - 1/2" frame height for 7 mm to 12 mm - 9/32" to 15/32" -thick coverings	
Length = cm - in.	TILE - THIN FRAME (H)		
	Item No.	\$ / Unit	
50 - 19-11/16	KLTFH 12 E 50	400.62	
60 - 23-5/8	KLTFH 12 E 60	412.40	
70 - 27-9/16	KLTFH 12 E 70	424.19	
80 - 31-1/2	KLTFH 12 E 80	435.97	
90 - 35-7/16	KLTFH 12 E 90	447.75	
100 - 39-3/8	KLTFH 12 E 100	459.54	
110 - 43-5/16	KLTFH 12 E 110	471.32	
120 - 47-1/4	KLTFH 12 E 120	483.10	
		22.5 mm - 7/8" frame height for 16 mm to 20 mm - 5/8" to 25/32" -thick coverings	
Length = cm - in.	TILE - THIN FRAME (H)		
	Item No.	\$ / Unit	
50 - 19-11/16	KLTFH 22 E 50	408.48	
60 - 23-5/8	KLTFH 22 E 60	420.26	
70 - 27-9/16	KLTFH 22 E 70	432.04	
80 - 31-1/2	KLTFH 22 E 80	443.83	
90 - 35-7/16	KLTFH 22 E 90	455.61	
100 - 39-3/8	KLTFH 22 E 100	467.39	
110 - 43-5/16	KLTFH 22 E 110	479.17	
120 - 47-1/4	KLTFH 22 E 120	490.96	



New TRENDLINE Colors Available

Schluter®-DESIGN-NICHE



Cream (TSC)

Bronze (TSOB)

Stone grey (TSSG)

Pewter (TSG)

DESIGN-NICHE

- Now offered in nine TRENDLINE colors
- Three sizes available: 12" x 12", 12" x 24" and 12" x 48"
- Adjustable frame for a flush or reveal edge installation
- Can be installed vertically or horizontally

4 NEW Colors Available!



Color-coated aluminum niche kit - 300 mm x 300 mm - 12" x 12" (nom.)					
Item No.	Color	Height 1	Height 2	Depth	\$ / Unit
DNA1 TSC	Cream (TSC)	298 mm - 11-3/4"	298 mm - 11-3/4"	91.5 mm - 3-5/8"	453.91
DNA1 TSOB	Bronze (TSOB)	298 mm - 11-3/4"	298 mm - 11-3/4"	91.5 mm - 3-5/8"	453.91
DNA1 TSSG	Stone grey (TSSG)	298 mm - 11-3/4"	298 mm - 11-3/4"	91.5 mm - 3-5/8"	453.91
DNA1 TSG	Pewter (TSG)	298 mm - 11-3/4"	298 mm - 11-3/4"	91.5 mm - 3-5/8"	453.91

Color-coated aluminum niche kit - 300 mm x 600 mm - 12" x 24" (nom.)					
Item No.	Color	Height 1	Height 2	Depth	\$ / Unit
DNA2 TSC	Cream (TSC)	298 mm - 11-3/4"	598 mm - 23-9/16"	91.5 mm - 3-5/8"	609.53
DNA2 TSOB	Bronze (TSOB)	298 mm - 11-3/4"	598 mm - 23-9/16"	91.5 mm - 3-5/8"	609.53
DNA2 TSSG	Stone grey (TSSG)	298 mm - 11-3/4"	598 mm - 23-9/16"	91.5 mm - 3-5/8"	609.53
DNA2 TSG	Pewter (TSG)	298 mm - 11-3/4"	598 mm - 23-9/16"	91.5 mm - 3-5/8"	609.53

Color-coated aluminum niche kit - 300 mm x 1200 mm - 12" x 48" (nom.)					
Item No.	Color	Height 1	Height 2	Depth	\$ / Unit
DNA3 TSC	Cream (TSC)	298 mm - 11-3/4"	1198 mm - 47-3/16"	91.5 mm - 3-5/8"	791.09
DNA3 TSOB	Bronze (TSOB)	298 mm - 11-3/4"	1198 mm - 47-3/16"	91.5 mm - 3-5/8"	791.09
DNA3 TSSG	Stone grey (TSSG)	298 mm - 11-3/4"	1198 mm - 47-3/16"	91.5 mm - 3-5/8"	791.09
DNA3 TSG	Pewter (TSG)	298 mm - 11-3/4"	1198 mm - 47-3/16"	91.5 mm - 3-5/8"	791.09

Contents

- 1x** Aluminum shower niche **4x** Foam spacers
- 1x** Adjustable frame **1x** KERDI-FIX
sealing and bonding compound
(290 ml - 9.81 fl oz)
- 1x** KERDI-BAND
waterproofing frame
- 4x** Adjustable nuts
(Largest size includes 8 adjustable nuts)



New Strainer and Grate Guards

Schluter®-KERDI-LINE-VARIO



Strainer

- Fits inside the KERDI-LINE-VARIO channel opening to trap and collect hair and debris.
- Simple to remove and clean.
- Prevents clogs that can lead to blocked pipes.

Strainer for KERDI-LINE-VARIO		
Item No.	Description	\$ / Unit
KLV-STR1	Strainer	8.17



Grate Guards

- Set of two protective blocks.
- Ensure grate stays in place.
- Shield waterproofing from sharp grate edges.
- Allow for grate and channel installation before wall tile.



Grate Guards for KERDI-LINE-VARIO			
Item No.	Description	Packaging	\$ / Pkg
KL VR GG/2	Grate Guards	2 units	4.29

Smarter Tools for Quicker, Precise Installs



Schluter®-MULTI-TROWEL

U-Notched Trowel for Shower Components

- U-Notches ensure consistent thin-set contact between substrate and product.
- Spreads thin-set efficiently, minimizing the number of passes required.
- Lightweight, ergonomic design reduces strain during extended use.
- Stainless steel blade resists corrosion for long-term durability.

Item No.	\$ / Unit
TRL-MUL	39.34



Schluter®-TPRO-ET

Embedding Tool for KERDI Membranes

- Rounded edges prevent tears or punctures in the membrane during embedding.
- Removes air pockets, ensuring optimal thin-set contact.
- Lightweight, non-corrosive, and easy to clean.
- Multiple working edges reach tight corners and wide surfaces for faster installation.

Item No.	\$ / Unit
TPROET1	15.00



Schluter®-PROCUT-SQR

Profile Cutting Guide

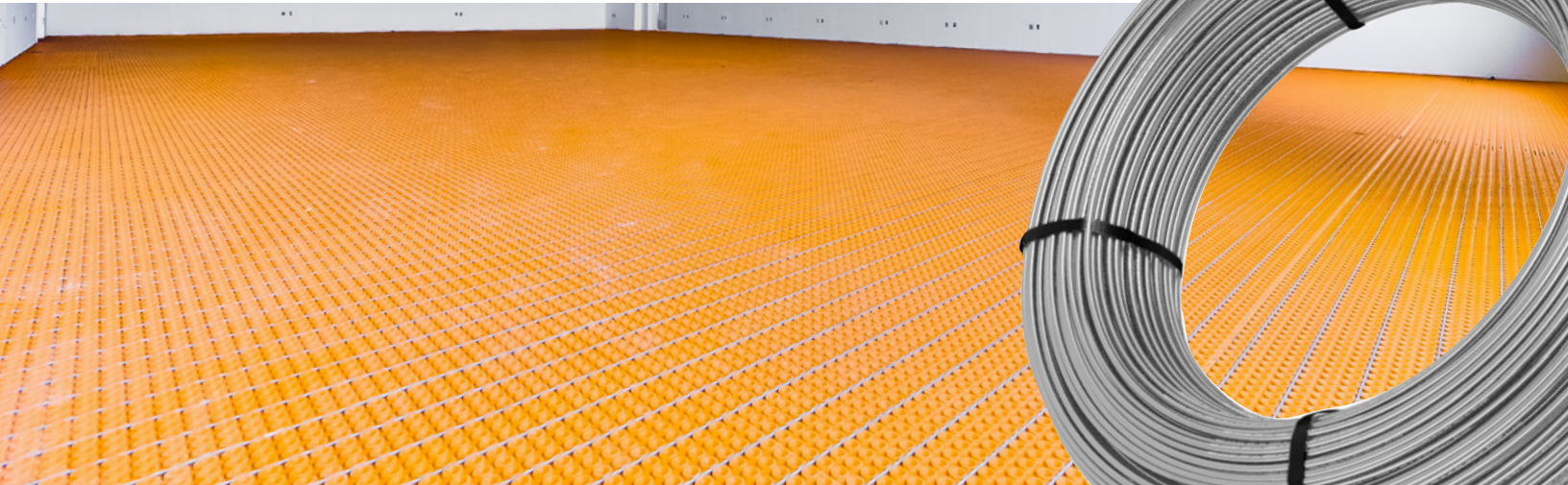
- Helps achieve precise 45° and 90° angles with ease.
- Secures profiles and pencil tile trim during cutting for faster fitting.
- Easy-to-grip surface provides stability and comfort during use.
- Accurate cuts reduce mistakes, re-cuts, and material waste, saving time and money.

Item No.	\$ / Unit
SQR1	58.00



Go Big... Bigger... **HUGE!**

Extended Schluter®-DITRA-HEAT Cable



Now Covers Up To **250 ft² (23.2 m²)**

To better meet the demands of larger projects, the **DITRA-HEAT-E-HK** cable line has been expanded with a new extended 240V option—reducing installation time and simplifying wiring for large-scale floors. This 825 ft (251.5 m) heating cable offers added flexibility for planning and installation, while maintaining the trusted performance of the DITRA-HEAT system.

- Fewer cable connections – One long run means fewer electrical terminations, reduced installation time, and simplified wiring.
- Ideal for larger installations requiring extended cable runs, such as commercial or high-end residential projects.
- Certified performance - CSA and UL certified for safety and reliability.

Schluter®-DITRA-HEAT-E-HK													
Heating Cable (240 V)													
Item No.	Heating Cable Length		Area Covered per Cable Spacing				Total Power	Avg. Power per Unit Area per Cable Spacing				Current	\$ / Length
			Regular 3 Stud		Alternating 3-2 Stud			Regular 3 Stud		Alternating 3-2 Stud			
	(ft)	(m)	(ft ²)	(m ²)	(ft ²)	(m ²)	(W)	(Watts/ft ²)	(Watts/m ²)	(Watts/ft ²)	(Watts/m ²)	(Amps)	
DHE HK 240 250	825.0	251.5	250.0	23.2	208.3	19.4	3160	12.6	136	15.2	164	13.2	1,495.00

Coming Fall 2026!



Floor Recessing System for Curbless Showers

Schluter®-KERDI-SHOWER-FRS

The **KERDI-SHOWER-FRS** floor recessing system makes building curbless showers simple and consistent. Designed for use with the Schluter-Shower System, it delivers the curbless shower your clients are looking for with the confidence of a system you already know and trust.



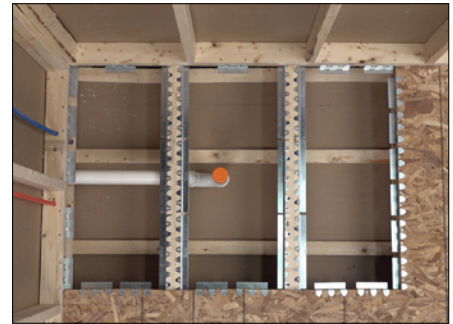
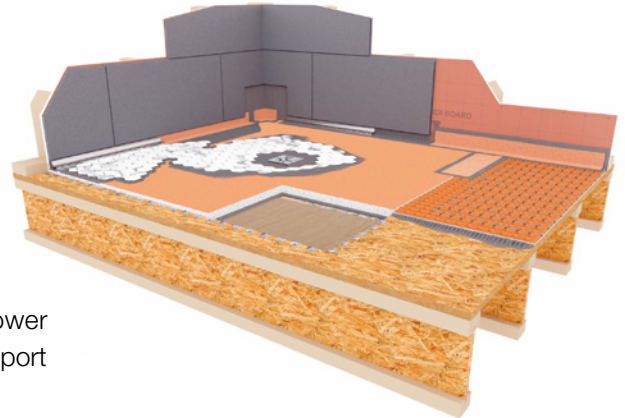
Coming Fall 2026!

KERDI-SHOWER-FRS






KERDI-SHOWER-FRS is a floor recessing system for curbless shower applications, featuring galvanized steel brackets that create a stable support structure for a lowered subfloor.

The system includes two bracket types: J brackets that fasten to the tops of joists, and P brackets that fasten around the perimeter, allowing recessed installation without structural modification or adding ledger boards.

KERDI-SHOWER-FRS is designed for use with KERDI-DRAIN point drains and KERDI-SHOWER prefabricated trays and fits dimensional lumber or I-joists spaced up to 19.2" (488 mm) o.c. Mounting on top of joists reduces conflicts with plumbing, HVAC, and electrical while lowering the subfloor by 11/16" (17.5 mm).



Subfloor Recessing Kits for Curbless Showers

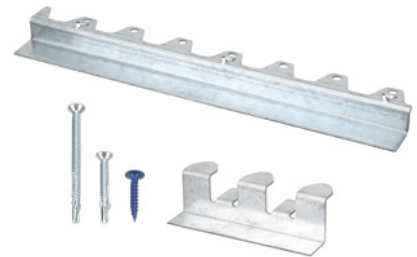
Contents				
	J brackets For joists		P brackets For perimeter	
			Self-tapping screws 2-3/4" (70 mm)	
			Self-tapping screws 1-5/8" (41 mm)	
			Wood screws 1-1/8" (29 mm)	

Schluter®-KERDI-SHOWER-FRS							
Subfloor recessing kit for curbless showers							
Item No.	Area	Quantity			Wood screws	\$/ Kit	
		J brackets	P brackets	Self-tapping screws			
				2-3/4"	1-5/8"	1-1/8"	
KS FRS K12	12 ft ²	14	21	50	105	40	656.00
KS FRS K16	16 ft ²	18	27	50	105	40	860.00

KERDI-SHOWER-FRS




Bracket Kits

KERDI-SHOWER-FRS Bracket Kits are ideal for larger or customized curbless shower layouts. P brackets for the perimeter or J brackets for joist mounting can be used in conjunction with KERDI-SHOWER-FRS floor recessing kits for larger shower footprints or purchased as needed to suit project-specific dimensions. Bracket kits include the necessary screws for installation.






J Brackets – for Joists

Schluter®-KERDI-SHOWER-FRS	
J bracket kit	
Item No.	\$ / Kit
KS FRS KJ2	70.00

Contents		
2x J brackets For joists	15x Self-tapping screws 1-5/8" (41 mm)	5x Wood screws 1-1/8" (29 mm)
		

P Brackets – for Perimeter

Schluter®-KERDI-SHOWER-FRS	
P bracket kit	
Item No.	\$ / Kit
KS FRS KP4	60.00

Contents		
4x P brackets For perimeter	10x Self-tapping screws 2-3/4" (70 mm)	15x Self-tapping screws 1-5/8" (41 mm)
		

Shims

KERDI-SHOWER-FRS Shims are HDPE support shims designed for use in 5/8" (16 mm) subfloor applications when installing the KERDI-SHOWER-FRS floor recessing system. Applying the shims to P brackets creates a secure connection with the surrounding 5/8" (16 mm) subfloor while maintaining the depth of the recessed section.



Schluter®-KERDI-SHOWER-FRS		
Shims		
Item No.	Qty / Package	\$ / Pkg
KS FRS SH60	60	65.00



DISCONTINUED ITEMS

Please note that the following products have been discontinued.

- **QUADEC-K**
- **DECO** stainless steel in sizes 5/16" (8 mm), 11/32" (9 mm), 17/32" (14 mm), 23/32" (18.5 mm), 1" (25 mm) and 1-3/16" (30 mm).
- **SCHIENE** in bright black and brushed graphite anodized aluminum (AGSG and AGRB), chrome-plated brass (MC), and all colors of color-coated aluminum. Please refer to JOLLY as an alternative to these discontinued SCHIENE finishes.



Scan here to download the
2026 Illustrated Price List

